

- b. Using spoon handle, push the gasket on the safety vent of the cover until pressure released.
6. To open: hold the Lower Handle with left hand and Upper Handle with right hand. Slightly turn Upper Handle to the right until 2 arrow marks from the pressure cooker body and Cover meets (See fig. 13). Lift the Cover to open.

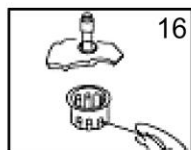
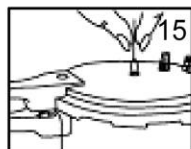
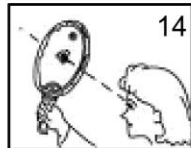
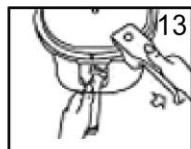
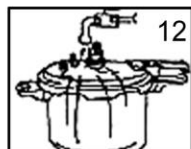
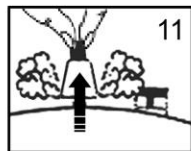
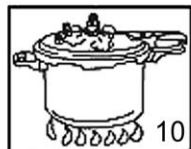
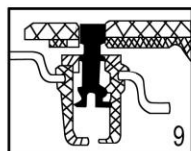
CLEANING AND MAINTENANCE

1. All parts are washable with soap and water.
2. Nozzle and Filter
After every use, clean the nozzle and filter with cleaning needle to remove food residue (See fig. 14, 15 & 16).
3. Safety Valve and Pressure Indicator
Unscrew, soak in hot water with soap for 5 minutes. Rinse thoroughly. If food stocks on the holes, use cleaning needle to remove.
4. Gasket
Soak in hot water with soap for 5 minutes. Rinse thoroughly. Do not hang the gasket. Place the rubber gasket in the plastic and put it inside the pressure cooker.
5. Let it dry. Be sure to assemble all detachable parts, except the gasket.
6. Store in dry place.

REMINDER: Please do not forget to register your product warranty through the warranty registration website at <https://imarflex.ph>



Distributed By: Topgadget Distributions, Inc.
2120 A. Linao St. Malate, Manila
Made in China



FOR WARRANTY REGISTRATION PLEASE
CLICK THIS LINK: <https://rb.gy/7b8cmw>

 **imarflex**

ALUMINUM PRESSURE COOKER

• 6 SAFETY FEATURES • HEAT RESISTANT HANDLES • SILICON GASKET • PRESSURE REGULATOR



- Silicon Gasket
- 6 Safety Features
- Heat Resistant Handles
- Pressure Regulator

**11 LITERS
CAPACITY**

FOR HOUSEHOLD USE ONLY
imartec® Corporation

QGP-3211

SPECIFICATION

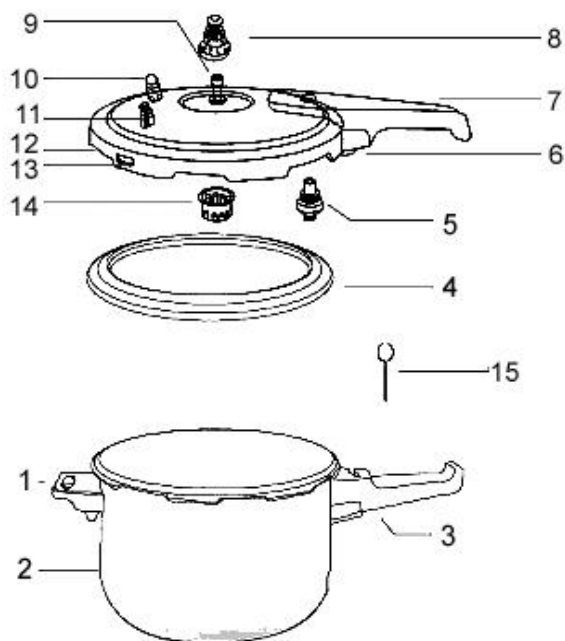
MODEL NO.	:	QGP-3211
CAPACITY	:	11 Liters
BOX DIMENSION	:	322*255*467mm
UNIT DIMENSION:	:	300*240*450mm
GROSS WEIGHT	:	3.32kg.
UNIT WEIGHT	:	2.69kg.
PSI	:	11.6psi

IMPORTANT SAFEGUARDS

1. Read all instructions carefully.
2. Do not modify any part of the aluminum pressure cooker.
3. Do not touch hot exterior surface when in use. Use both handles when moving this pressure cooker.
4. Ensure that the pressure is fully released before opening the cover.
5. Always check the pressure release devices for clogging before use.
6. Never use the pressure cooker with a torn gasket.
7. Do not fill the pressure cooker more than 2/3 of its capacity.
8. Do not place anything on top of the cover. (e.g. kitchen towel).
9. Do not use the aluminum pressure cooker without water.
10. Close supervision is necessary when used by or near children.
11. Do not use this unit other than its intended use.
12. Save this instruction for future reference.

DESCRIPTION OF PARTS

1. Short Handle
2. Body
3. Lower Handle
4. Gasket
5. Pressure Indicator
6. Slide Shaft
7. Upper Handle
8. Weight Regulator
9. Nozzle (Center Pipe)
10. Safety Valve
11. Safety Valve
12. Cover
13. Safety Vent
14. Filter
15. Cleaning Needle



HOW TO USE

1. Place the food and the required quantity of liquid in the pressure cooker.
Maximum filling levels:
 - a. solid food e.g. vegetables, meat, fish: not more than 2/3 capacity (See fig. 1)
 - b. cereals e.g. rice: not more than 2/3 capacity (See fig. 2)
 - c. liquids e.g. soups, water: not more than 1/2 capacity (See fig. 3)
2. Place the Gasket in the Cover, be sure it is fitted on side slot. To close: hold the Upper Handle with right hand and Lower Handle with left hand. Align the arrow marks on the Cover and the Handle, then turn Upper Handle to the left, until Upper and Lower Handles lock. (See fig. 4 & 5). Put the Weight Regulator on the Nozzle.
3. Grab the Handle with your both hands (See fig. 6). Put the pressure cooker on top of the gas stove. Turn fire into medium high, fire should not be coming out of the edge of the pressure cooker (See fig. 7).
4. While cooking, a small amount of steam will escape from the Weight Regulator and Pressure Indicator hole (See fig. 8). The Pressure Indicator will up and the Cover will lock automatically (See fig. 9). Once the Pressure Indicator goes up, after few minutes the Weight Regulator will whistle and turn around. A steady flow of steam will begin to escape (See fig. 10), which indicates that it is in state of accumulating pressure. Lower the heat and start the timer.
5. Once the required time is reached, turn OFF the fire. To release the pressure inside, lift and hold the regulator. (See fig. 11). If the Pressure Indicator is back to its proper position (down) it means, the pressure has been released.
In case the pressure clogs. Try the following:
 - a. Bring the pressure cooker to the faucet, allow the water to flow in the cover until pressure indicator drops (See fig. 12). Or

