

FOR WARRANTY REGISTRATION PLEASE
CLICK THIS LINK: <https://rb.gy/7b8cmw>

FOR SERVICE CENTERS PLEASE
CLICK THIS LINK: <https://rb.gy/senj28>

ICS

ESPRESSO + MILK COFFEE MACHINE

**4 Preset
Function**



Espresso



Cappuccino



Milk



Latte



**One-touch
Beverages
Selection**



**Automatic
Milk Carafe**



**Thermoblock
Heating System**



**20 Bar Powerful
Pressure Pump**

0.9L

Water Tank

0.4L

Milk Carafe

• 52mm Portafilter • 90mm Dispensing Height

FOR HOUSEHOLD USE ONLY

IEM-520DS

SPECIFICATION

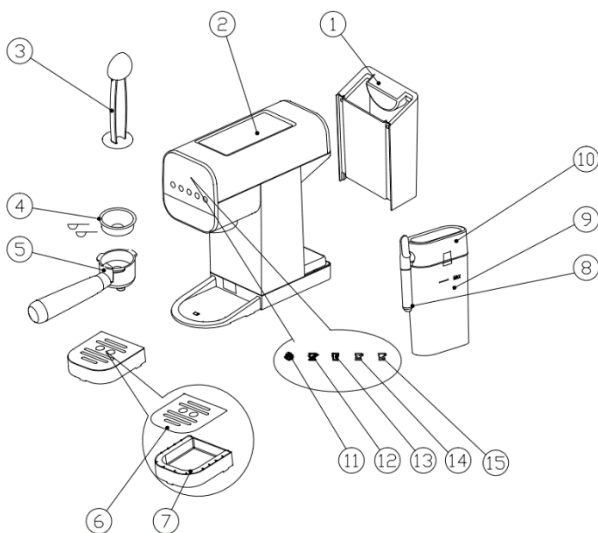
Model no.	:	IEM-520DS
Voltage	:	230Va.c. 60Hz
Absorbed Power	:	1300W
Bar Pressure	:	20 Bar
Water Tank Capacity	:	0.9L
Milk Tank Capacity	:	0.4L
Unit Dimension	:	184.4mm * 385.5mm * 297.3mm
Gross Weight	:	4.16 kgs
Unit Weight	:	3.62 kgs
Accessories	:	Measuring spoon with tamper, Porta filter Milk tube

IMPORTANT SAFEGUARDS

When using electrical appliances, basic safety precautions should always be followed, including the following:

1. Read all instructions carefully.
2. Before using espresso machine, check if the voltage indicated corresponds with the electric outlet (230Va.c.).
3. Do not use the two-way socket with other appliances.
4. Do not use any appliance with a damaged cord or plug. If the cord is damaged it should be replaced with the same type and size or bring the unit to the nearest authorized Imarflex service center.
5. Do not use the espresso machine if the water tank is empty.
6. Do not place the espresso machine near gas stove, electric burner, heated oven, or any other hot surface.
7. Keep it away from the edge of the counter to avoid accidents.
8. Children should be supervised to ensure that they do not play with the appliance.
9. This appliance is not intended for use by persons (including children) with reduced physical, sensory or mental capabilities, or lack of experience and knowledge, unless they have been given supervision or instruction concerning use of the appliances by a person responsible for their safety.
10. Do not allow cord to touch the hot surface of the espresso machine.
11. For protection against electric shock, do not immerse espresso machine in water or any other liquid.
12. The use of any accessory not recommended by the appliance manufacturer may result in fire, electric shock or injury of the user.
13. Do not touch the hot surfaces of the espresso machine (milk frothed dispensing tube and warming plate).
14. Always ensure that the porta filter is properly placed in the unit when dripping coffee.
15. Do not use the porta filter for other purposes.
16. The unit is not intended for outdoor use.
17. Do not use the unit other than its intended use.
18. After use, always switch OFF and unplug the unit from the convenience outlet.
19. Allow the unit to cool down before cleaning.
20. No parts are dishwasher safe.
21. Do not exceed the "MAX" water level indicator when filling.
22. Avoid water spillage into the socket, connector, cord and alike.
23. Use on a hard, flat level surface only, to avoid interruption of airflow underneath the appliance.
24. Never use warm or hot water to fill the water tank. Use cold water only.
25. **For household use only, not intended for any business purposes.**
26. **Important:** Failure to observe the warning could result in injury or damage to the appliance. Keep all packaging (plastic bags, polystyrene foam) away from children. **Danger of burns!** Failure to observe the warning could result in scalds or burns. This appliance produces hot water and steam may form while it is in operation. Avoid contact with splashes of water or hot steam.
27. Do not use this unit other than its intended use.
28. Save this instruction manual for future reference.
29. **CAUTION:** In order to avoid a hazard due to inadvertent resetting of the thermal cutout, this appliance must not be supplied through an external switching device, such as a timer, or connected to a circuit that is regularly switched on and off by the utility.

DESCRIPTION OF PARTS



NO.	DESCRIPTION
1	Removable Water Tank
2	Cup Warming Plate
3	Measuring Spoon with Tamper
4	Filter Cup
5	Portafilter
6	Removable Drip Cover
7	Removable Drip Tray
8	Milk Frothed Dispensing Tube
9	Removable Milk Tank
10	Milk Tank Cover
11	Power Button
12	Espresso Button
13	Milk Button
14	Cappuccino Button
15	Latte Button

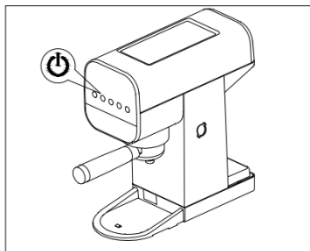
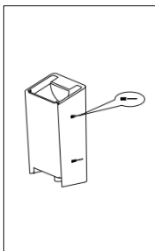
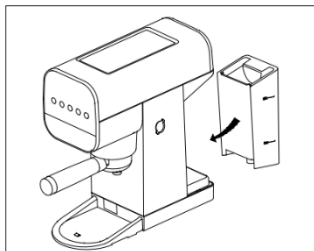
INSTALLING THE DEVICE

1. Water penetrating the espresso machine could cause damage. Do not place the appliance near taps or sinks.
2. The appliance could be damaged if the water it contains freezes. Do not install the appliance in a room where the temperature could drop below freezing point.
3. Arrange the cord in such a way that it cannot be damaged by sharp edges or contact with hot surfaces (e.g. electric hot plates).
4. The appliance gives off heat. After positioning the appliance on the worktop, leave a space of at least 3 cm between the surfaces of the appliance and the side and rear walls and at least 15cm above the machine.
5. Clean all the removable parts with tap water.

FILLING THE WATER TANK

NOTE: Before first use, wash all the accessories and water tank with warm water.

1. Extract the tank by pulling it back.
2. Fill the tank with fresh clean water, be careful not to exceed the Max level. Put the water tank back to the espresso machine.



IMPORTANT: Never operate the appliance without water in the tank or without the tank.

1. Please fill with soft drinking water or filtered water, hard water will cause to shorten the service life of the machine. Do not add any chemical cleaners into the tank.

**NOTE: It is normal for espresso machine to have water in the space under the water tank.
Please keep it dried regularly with a clean sponge.**

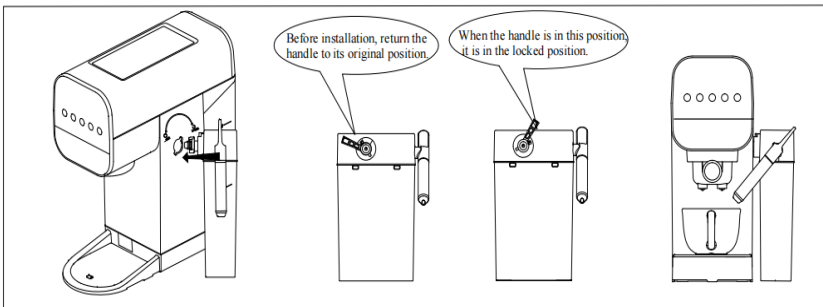
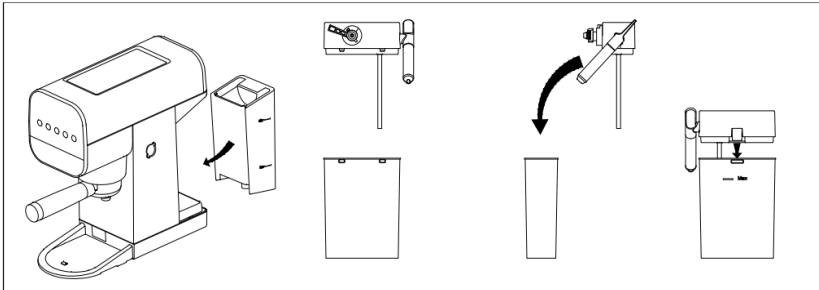
CONTROL PANEL



FIRST USE

At the first use, washing all the accessories and rinsing the internal circuit as follows

1. Remove the silicone seal at the bottom of the water tank.
2. Fill the water tank. (refer to the filling the water tank section)
3. When plug in, the appliance will buzz 1 sound, 5 buttons flash 3 times for self-diagnosis cycle.

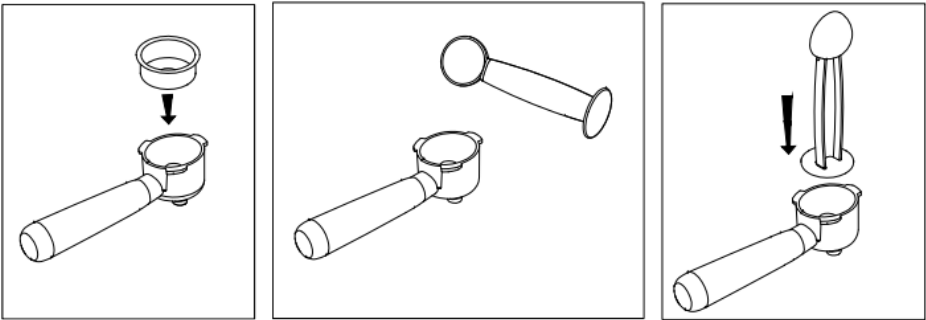


4. Attach the milk tank properly by aligning it with the assembly hole. Make sure that you put purified water first to clean the milk tank and pipes.
5. Tap the "Power" button, all lights will flash to indicate espresso machine is heating up. After Preheating the espresso machine will "buzz" and all buttons' lights are on.
6. Attach the portafilter to the espresso machine, no need to put ground coffee for the first use only.

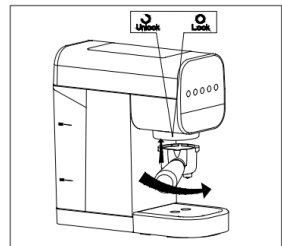
- Place a cup/container with a 500ml minimum capacity under the boiler outlet, press the “☐” milk button to release air/water pressure inside. Operation would last 30 seconds until water comes out. Repeat this operation 5 times, when espresso machine is in first time use or long time no use.
- Machine will automatically turn off when there is no operation after 30 minutes. You can tap “⏻” power button to start again.

HOW TO MAKE ESPRESSO COFFEE

- Make hotter coffee by rinsing the cup with hot water.
- Attach the portafilter holder to the espresso machine do not add ground coffee. Press the “☕” espresso button.
- Rest the cups and put it on top of the water.
- Place the filter cup in the portafilter and place pre-ground coffee 16-18g in the filter.



- Distribute the pre-ground coffee evenly and press lightly using the tamper in the spoon.
- Remove any excess coffee from the rim of the filter cup and portafilter.
- Align the portafilter arrow to the unlock symbol in the espresso machine and attach the filter holder and turn the portafilter to the right until it reaches the lock symbol.
- Place cup or cups under the portafilter spouts. Make sure the light corresponding to the “☕” espresso button is on, then press it. If you want to stop the operation during the process press the “☕” espresso button again once.
- To remove the portafilter, turn handle from right(lock) to left(unlock).



FILLING THE MILK TANK

- Make sure all parts of the espresso machine are assembled well.
- Fill around 5°C/40°F of milk into the milk tank, do not exceed the maximum capacity of the tank. Cover the milk tank carefully and check the locker direction.
- Use two hands to hold the milk tank and insert it into the espresso machine.
- To install milk tank correctly please refer to the “First Use” section.
- Turn the handle on the milk tank to the lock position.
- When all buttons are lighted, the machine is ready to use.

HOW TO MAKE FROTHING MILK

1. Fill the milk based on “Filling the milk tank” section.
2. Put the cup under the portafilter and align the frothed milk dispensing tube.
3. When the “☐” milk button light is steady, press the button to dispense milk. If you want to stop the operation during the process press the “☐” milk button again once.

HOW TO MAKE CAPPUCCINO

1. Fill the milk based on “Filling the milk tank” section.
2. Follow the steps for making espresso and attach the filter holder to the espresso machine.
3. Put the cup under the portafilter and align the frothed milk dispensing tube.
4. When the “☉” cappuccino button light is steady, press the button to dispense milk. If you want to stop the operation during the process press the “☉” cappuccino button again once.

NOTE: If you need to make another cappuccino, after dispensing of the milk, the water temperature in the boiler is too hot, it is recommended to make coffee after machine has cooled. If you need to make coffee immediately, you can press the “☉” espresso button to release some hot water out.

HOW TO MAKE LATTE

1. Fill the milk based on “Filling the milk tank” section.
2. Follow the steps for making espresso and attach the filter holder to the espresso machine.
3. Put the cup under the portafilter and align the frothed milk dispensing tube.
4. When the “☉” latte button light is steady, press the button to dispense milk. If you want to stop the operation during the process press the “☉” latte button again once.

CLEANING

1. Do not use solvents, abrasive detergents or alcohol to clean the coffee machine.
2. Do not use metal objects to remove encrustations or coffee deposits as they could scratch metal or plastic surfaces.
3. If the appliance is not used for more than one week, before using it again, we strongly recommend you perform a rinse cycle.
4. While cleaning, never immerse the coffee maker in water. It is an electrical appliance.
5. Do not use solvents or abrasive detergents to clean the coffee maker. Use a soft damp cloth.
6. Clean the filter holder cup.
7. Clean water tank regularly with damp cloth and a little mild dishwashing liquid.

Cleaning the Drip Tray

IMPORTANT: Please pay attention to the amount of water in the drip tray. Before water overflows from the cup tray, the drip tray must be emptied and cleaned otherwise the water may overflow the edge and damage the appliance, the surface it rests on or the surrounding area. We suggest to clean it every time when you using. When clean the drip tray, please proceed as follows:

1. Remove the drip tray and cup tray.
2. Separate the cup tray and drip tray, clean them with a soft damp cloth, then reassemble them.
3. Dry and put it back in the machine.

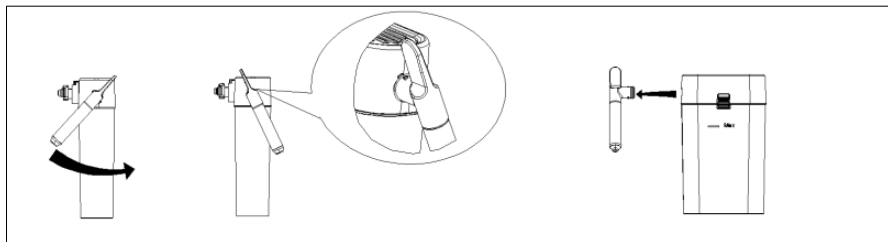
Cleaning the Coffee Filters

1. Clean the coffee filters regularly, Rinse the filters under running water.
2. Make sure the holes are not blocked. If necessary, clean with a pin.

Cleaning the Frothed Milk Dispensing Tube

IMPORTANT: For hygienic reasons, the cappuccino maker should always be cleaned after use.

1. Turn the steam dial to deliver a little steam for a few second. This will make the tube to discharge the milk left inside.
2. Press the “⏻” power button to turn the espresso machine off.
3. Ensure the tube is cool before cleaning. Pull the tube off the milk tank and rinse under running water to remove any milk residue.



Cleaning the Milk Tank

1. Remove the milk tank from the espresso machine. Wash it by cleaning and filling it with water
2. Clean the pipe inside based on the “First Use” section.

TROUBLESHOOTING

Problem	Cause	Solution
No espresso coffee is delivered	Residual air inside	Release the residual air inside according to “First Use” Section
	No water in the tank	Fill the tank
	The holes in the filter holder are blocked	Clean the filter holder spout holes
	The filter is blocked	Clean as described in “Cleaning the coffee filters” Section
	The tank has been inserted incorrectly and the valves on the bottom are not open	Remove the Silicone seal, press the tank down lightly to open the valves on the bottom
The espresso coffee drips from the edges of the filter holder rather than the holes	The filter holder has been inserted incorrectly or is dirty	Attach the filter holder correctly and rotate firmly as far as it will go
	The holes in the filter holder spouts are blocked	Clean the filter holder spout holes
	The filter is blocked	Clean as described “Cleaning the coffee filters” Section
The filter holder cannot be attached to the appliance	Too much coffee has been placed in the filter	Use the measure supplied and make sure you are using the correct filter for the type of preparation

The appliance will not make any coffee and the function button lights flash for a few seconds.	No water in the tank	Fill the tank with water
	The tank has been inserted incorrectly and the valves on the bottom are not open	Press the tank down lightly to open the valves on the bottom
	The filter is blocked	Clean as described in "Cleaning the coffee filters" Section
The coffee froth is too light (delivered from the spout too fast)	The pre-ground coffee is not pressed down firmly enough	Press the pre-ground coffee more firmly
	There is not enough pre-ground coffee	Increase the quantity of pre-ground coffee
	The pre-ground coffee is too coarse	Use only pre-ground coffee for espresso coffee makers
	The wrong type of pre-ground coffee is being used	Change the type of pre-ground coffee
The coffee froth is too Dark (delivered from the spout too slowly)	The pre-ground coffee is pressed down too firmly	Press the coffee down less firmly
	There is not enough pre-ground coffee	Reduce the quantity of pre-ground coffee
	The filter is blocked	Clean as described in "Cleaning the coffee filters" Section
	The pre-ground coffee is too fine	Use only pre-ground coffee for espresso coffee makers
	The pre-ground coffee is too fine or damp	Use pre-ground coffee for espresso coffee makers only and make sure it is not too damp
No milk froth is formed when making cappuccino	Milk not cold enough	Always use milk at refrigerator temperature (5°C/40°F)
	Cappuccino maker dirty	Clean as described in section "Cleaning the Frothed Milk Dispensing Tube" Section
The appliance does not function and all function button lights flash		Disconnect the appliance immediately and contact Customer Services